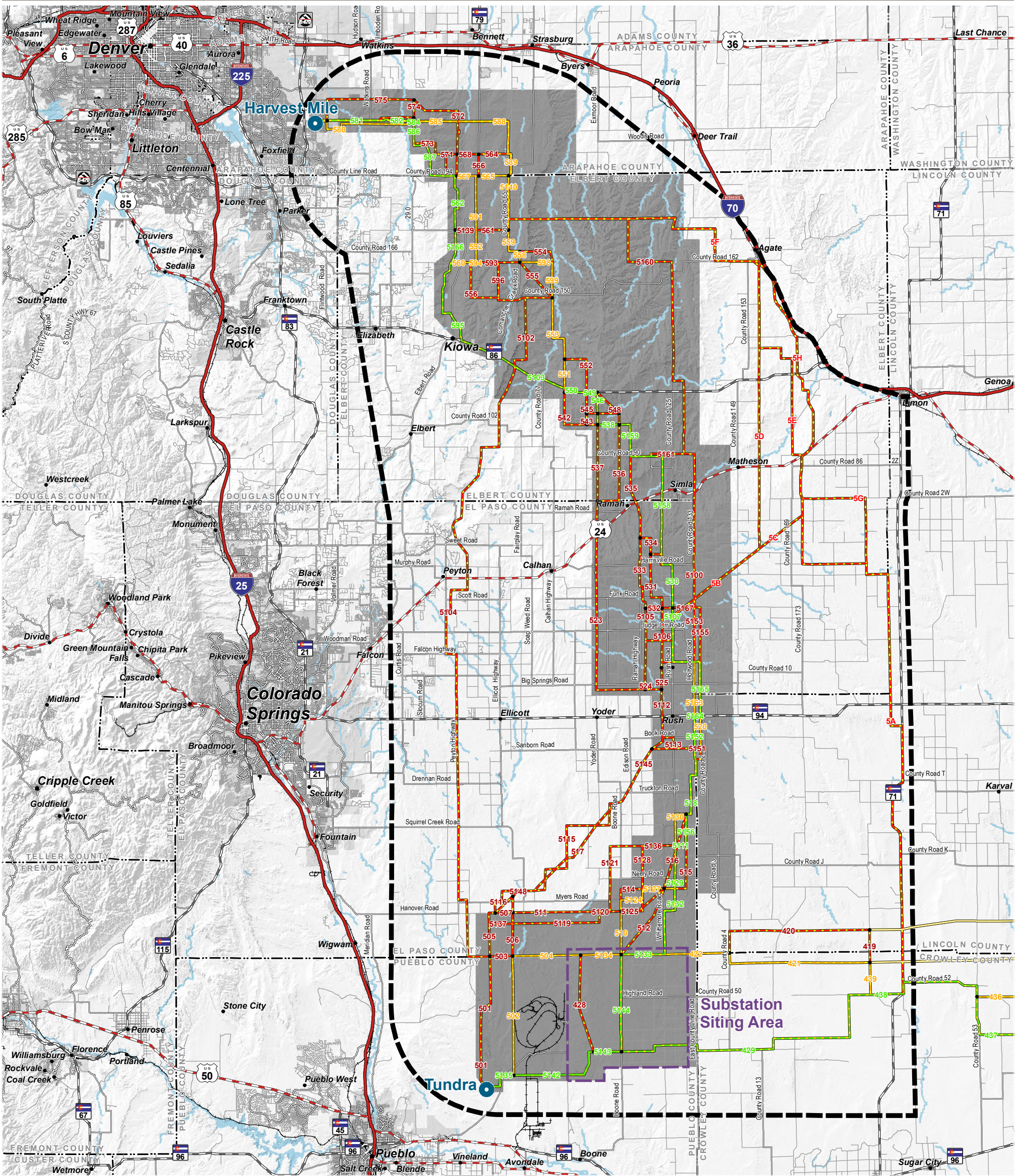


COLORADO'S POWER PATHWAY

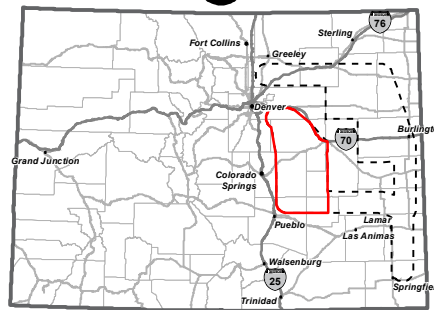


- Legend**
- Existing Substation to be Expanded
 - Study Area
 - Focus Area
 - New 345kV Substation Siting Area
 - Preferred Transmission Link
 - Alternative Transmission Link
 - Eliminated Transmission Link
 - Previously Considered Transmission Link

- Hydrology**
(NHD 2020)
- Waterbody
- Transportation**
(CDOT 2021, BTS 2020)
- Interstate
 - U.S. Highway
 - State Highway
 - Local Road
 - Railroad

- Boundary**
(CDOT 2021, DOLA 2021)
- Municipal Boundary
 - County

0 10 20
Miles



PRELIMINARY, SUBJECT TO CHANGE
The information contained herein is believed to be accurate and suitable for limited internal use only. Xcel Energy/Public Service Company of Colorado makes no warranty as to the accuracy or suitability of any information contained herein for use by third parties. The accuracy of this map and the information depicted should be verified prior to use. The user shall assume all risk and responsibility for any and all damages, including consequential damages, which may arise from the user's reliance on this information.

Revised: 12/1/2022 | NOT FOR CONSTRUCTION
Path: P:\1163_0025_CO_Power_Pathway\GIS\Layouts\Segment_5\Overview_Links.mxd

Segment 5 - Tundra to Harvest Mile

Link Overview