



**COLORADO**

**Department of  
Regulatory Agencies**

Public Utilities Commission

C/O PUC Proceeding # 25A-0354E

1560 Broadway, Suite 250

Denver, CO 80202

**JOIN THE COLORADO PUBLIC UTILITIES COMMISSION'S  
PUBLIC COMMENT HEARING ON  
XCEL ENERGY'S APPEAL OF A LOCAL GOVERNMENTAL LAND USE  
DECISION ISSUED BY ELBERT COUNTY**

**OPEN FOR ADDITIONAL DETAILS**



# JOIN THE COLORADO PUBLIC UTILITIES COMMISSION'S PUBLIC COMMENT HEARING ON XCEL ENERGY'S APPEAL OF A LOCAL GOVERNMENTAL LAND USE DECISION ISSUED BY ELBERT COUNTY

The Colorado Public Utilities Commission (PUC) is taking public comment on Proceeding 25A-0354E, an appeal of a local governmental land use decision. Xcel Energy has applied for an appeal of the denial of land use applications for approximately 48 miles of Colorado's Power Pathway within Elbert County.

Information regarding this case can be found by visiting the E-filings page on the PUC website and entering Proceeding Number "25A-0354E" in the Search field.

## IN-PERSON PUBLIC COMMENT HEARING



### WHO

All community members,  
stakeholders and PUC



### WHEN

Tuesday, December 9, 2025,  
from 5:00 to 7:00 p.m.



### WHERE

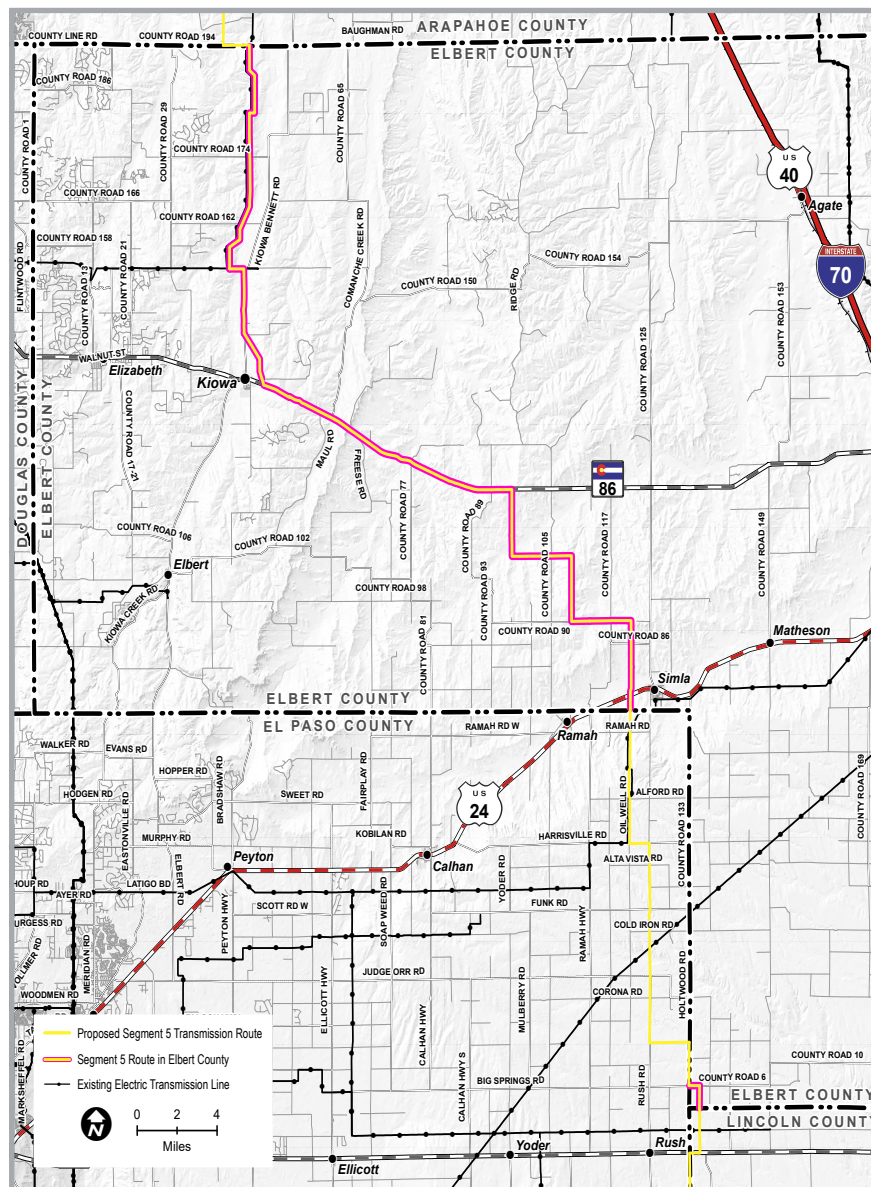
Agricultural Building at the  
Elbert County Fairgrounds,  
95 Ute Avenue, Kiowa, CO 80117

## OTHER WAYS TO SUBMIT PUBLIC COMMENT

Written or oral public comments can be provided by members of the public at any time using methods outlined below. Please include "Proceeding No. 25A-0354E" to refer to this case.

- Submitting written comments through the Commission's E-Filing System at: <https://www.dora.state.co.us/pls/efi/EFI.homepage>
- Submitting written comments using the Commission's online form or through email at: [dora\\_puc\\_website@state.co.us](mailto:dora_puc_website@state.co.us). These comments will be posted in E-Filings for this Proceeding
- Mailing comments to the Commission's offices at: **Colorado Public Utilities Commission, 1560 Broadway, Suite 250, Denver, CO 80202**
- Calling **303-869-3490** to leave oral comments (available in English and Spanish)

## COLORADO'S POWER PATHWAY



Segment 5 route in Elbert County. This map is a graphic and may not show exact locations.

Services for foreign language speakers and persons with disabilities can be provided upon receipt of a reasonable accommodation request. Requests should be made at least one week prior to the event by completing the Language Access Request Form, available at: <https://puc.colorado.gov/webcasts>.